

Highly Erodible Soils



Town of Bristol, NH
Land Use Office
Natural Resources Mapping

Legend

- Municipal Boundaries
- Tax Parcels - 2017
- Newfound Lake Watershed
- Conservation & Public Lands
- Highly Erodible Soils

Highly Erodible Soils

The NRCS soil survey for Grafton County classifies soils according to erosion risk with highly erodible soils of primary concern for community development. These soils exhibit particle sizes and soil structure that are prone to erosion by storm water run-off if disturbed.

About 55% of Bristol has highly erodible soils, found in large, contiguous areas in every portion of town (totaling roughly 6,000 acres). Note the close association of highly erodible soils and steep slopes (purple color) in the **inset map**. Nearly 1,350 acres, or 23% of all highly erodible soils in Bristol, are found on slopes greater than 25%.

Since the erosive power of storm water increases significantly with steeper slopes, these areas are of particular concern when contemplating future land development. New roads are a special concern as drainage from roads traversing steep slopes is difficult to control; serious soil erosion is typical; such runoff harms water quality in nearby streams and water bodies.

A Project of the
Newfound Lake Region Association
with Funding Provided by NHDES

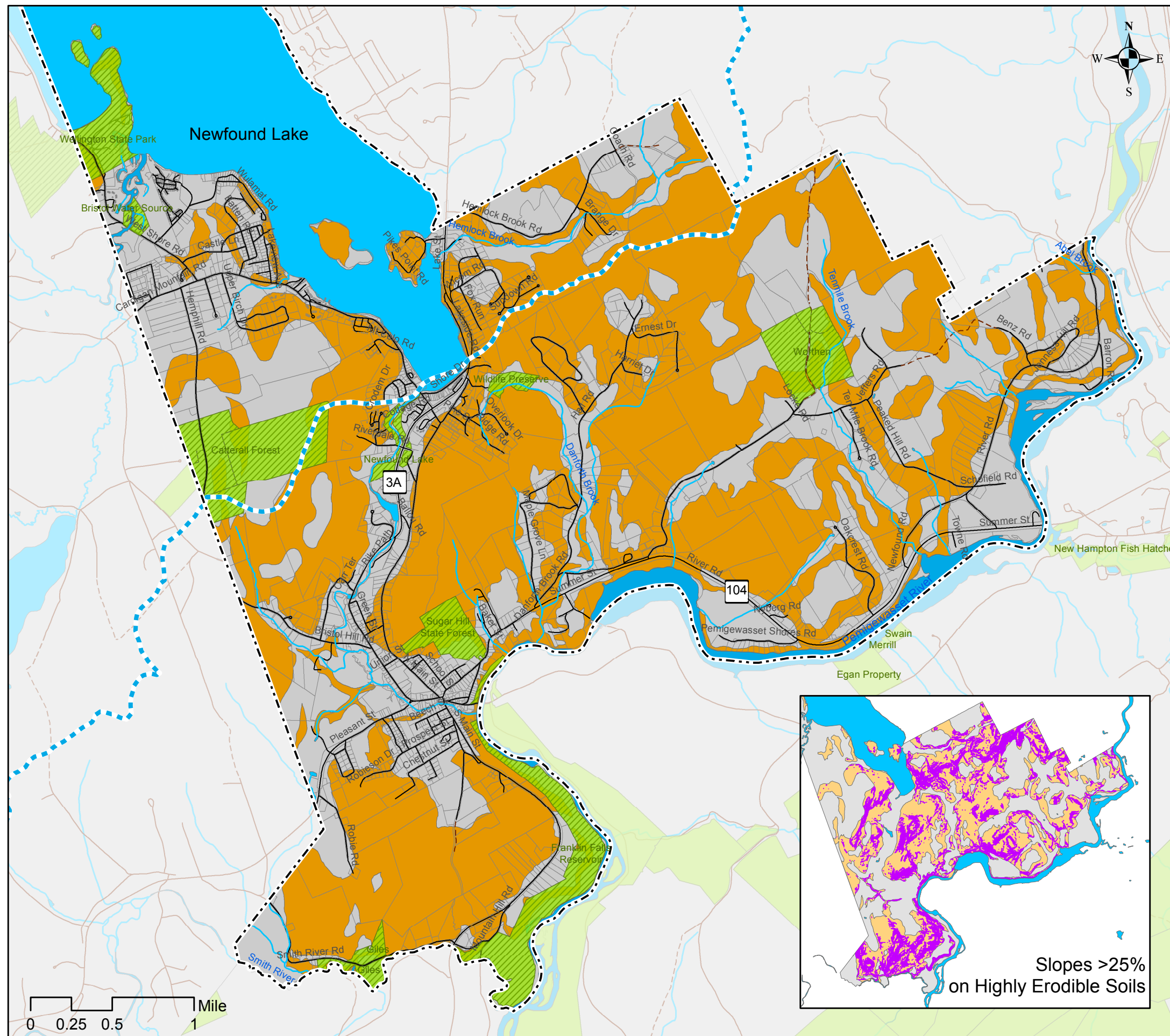


Funding for this project was provided in part by a Watershed Assistance Grant from the NH Department of Environmental Services with Clean Water Act Section 319 funds from the U.S. Environmental Protection Agency.

Mapping & Analysis by
GreenFire GIS



Map Date: December 20, 2018



0 0.25 0.5 1 Mile